

SCC WAX WRAP | PRIMEGUARD | PRO MOLD PUTTY | OUTERWRAP



SCC WAX WRAP 80A/80U

CORROSION PROTECTION OF:

**PIPELINES, FITTINGS, STREET TEES, FLANGES, VALVES, BOLTS, VAULTS
BRIDGE CROSSINGS, TUNNELS AND IRREGULAR SHAPES & SPACES**

SCC Wax Wrap is a petroleum-based compound impregnated into a non-woven synthetic carrier that provides long lasting external corrosion protection for **Above-ground (80A) or Below-ground (80U)** metal substrates and infrastructure. It easily conforms to irregular shaped profiles, sealing out moisture and can be applied over wide range of temperatures and wet or dry surfaces.

SCC Wax Wrap has been formulated to provide best in class corrosion protection w/o harsh smells and clay fillers. It stays pliable and flexible while absorbing minimal movement and vibrations of substrate.

SCC Wax wrap is VOC free, NON-Toxic and shows zero cathodic disbondment. These SCC products can be applied where water is present making it ideal for tunnel and vault applications.

SCC Wax Wrap system has the pliability and adhesion you are looking for, even in extreme ambient temps and stays pliable in cold-weather.

Upon completed application, Projects can be backfilled and/or back to service immediately.

SCC Wax Wrap Systems is successfully used in pipeline, water and wastewater, oil & gas industries, facilities and more. Manufactured in the USA in Jackson, Michigan.



VCP Sales is proud to be the exclusive Global distributor of SCC Wax Wraps and its' associated corrosion prevention products.

www.vcpsales.com



SCC WAX WRAP | PRIMEGUARD | PRO MOLD PUTTY | OUTERWRAP

SCC WAX WRAP 80A
ABOVE-GROUND

An 80-90mil, petroleum based compound impregnated into a non-woven synthetic carrier that provides long-term corrosion prevention.

USE:

For application on **above-ground** metal structures, infrastructure and pipelines needing corrosion protection.

PACKAGING:

4"x9' rolls (24 Rolls/Case)	Coverage:	72ft ²	50% Overlap: 36ft ²
6"x9' rolls (16 Rolls/Case)	Coverage:	72ft ²	50% Overlap: 36ft ²
9"x18' rolls(6 Rolls/Case)	Coverage:	81ft ²	50% Overlap: 40ft ²
12"x18' rolls(4 rolls/Case)	Coverage:	72ft ²	50% Overlap: 36ft ²

*Other widths, lengths **and** 60 mil available

SPECIFICATIONS:

Color	Brown, White, Grey
Thickness	80-90mils
Dielectric strength(ASTM D149)	404 volts/mil
MVR: 0.0045 g/h ft	Permeability Rate ASTM E96 0.00050 perms avg.
Application Temperature	-40°F to 155°F
Operating Temperature	-50°F to 155°F
Drop Melt Point (ASTM D127)	184°F
Flash Point	307°F
Salts Test (ASTM B117)	No Visible Effect
UV Test (ASTM G53)	No Visible Material Degradation
Chemical Resistance (ASTM G20)	No Effect on Material

ADVANTAGES:

- SP-2, only minimal surface prep required
- UV and Chemical Resistance
- Not effected by water, salts, acids or chemicals
- Odorless
- Superior in wet/humid environments
- No cure time, immediate backfill
- Nontoxic, no VOCs
- No Clay Fillers
- Easily conforms to irregular shaped surfaces
- Can be painted immediately, no wait time
- Meets and Complies with AWWA C217 Standard, NACE SP0375-2018

SCC WAX WRAP 80U
BELOW-GROUND

An 80-90mil, petroleum based compound impregnated into a non-woven synthetic carrier that provides long-term corrosion prevention.

USE:

For application on **below-ground** metal structures and pipelines needing corrosion protection.

PACKAGING:

4"x9' rolls (24 Rolls/Case)	Coverage:	72ft ²	50% Overlap: 36ft ²
6"x9' rolls (16 Rolls/Case)	Coverage:	72ft ²	50% Overlap: 36ft ²
9"x18' rolls(6 Rolls/Case)	Coverage:	81ft ²	50% Overlap: 40ft ²
12"x18' rolls(4 rolls/Case)	Coverage:	72ft ²	50% Overlap: 36ft ²

*Other widths, lengths **and** 60 mil available

SPECIFICATIONS:

Color	Brown
Thickness	80-90mils
Dielectric strength	296 volts/mil
Cathodic Disponding Resistance (ASTM G-8)	ZERO Disbondment
MVR: 0.0030	Permeability Rate ASTM E96 0.00024 perms avg.
Application Temperature	-40°F to 155°F
Operating Temperature	-50°F to 155°F
Drop Melt Point(ASTM D127)	179°F
Flash Point (ASTM D92)	538°F

ADVANTAGES:

- SP-2, only minimal surface prep required
- Ideal when transitioning from old coating
- Superior in extreme environments
- No cure time, immediate backfill
- Nontoxic, no VOCs
- No Clay Fillers
- Easily conforms to irregular shaped surfaces
- CP Compatible
- Meets and Complies with AWWA C217 Standard, NACESP0375-2018



VCP Sales is proud to be the exclusive Global distributor of SCC Wax Wraps and its' associated corrosion prevention products.

www.vcpsales.com

PRO-MOLD PUTTY

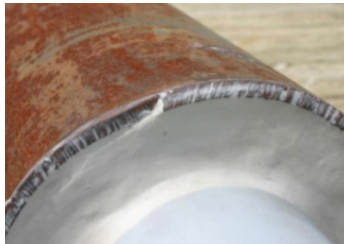
Petroleum based, anticorrosive filling compound, that molds and smooths the contours of irregular shapes, fittings and surfaces. Fills Voids for an even application of SCC Wax Wrap each time.

PACKAGING:

2 Gallon pails
Coverage: 462 cubic inches

SPECIFICATIONS:

Specific Gravity: 1.11 *ASTM D70*
Application Temp: 40F° to 200F°
Service Temp: <200°F
Flash Point: 350°F
Pour Point: 240°F



FILLING AND SEALING VOID IN CASING

ADVANTAGES:

- No Fillers
- Min. surface preparation required, SP-2
- Creates smooth profile, fills voids
- No curing time, no pot life restrictions
- Environmentally safe, non toxic, no VOC's
- Will not dry out in heavy clay soils

PRIMEGUARD PRIMER

PrimeGuard is a formulation of petroleum based waxes, plasticizers, and moisture displacing corrosion inhibiting compounds.

USE:

As a moisture displacement, surface conditioner for corrosion prevention on metal surfaces prior to application of SCC Wax Wrap.

SPECIFICATIONS:

Color: Brown or White
Coverage: 1 gal/100 ft²
Flash Point: 507°F
Drop Melting Point: 176°F
Service Temp: -40°F - 155°F

*High-Temp Available 250°F



PRIMEGUARD Primer

PACKAGING:

4 - 1 Gallon pails per case.

ADVANTAGES:

- Displaces moisture, can be applied under water on metal surfaces
- Easy to apply by hand or brush
- No curing time needed, no mixing req.
- Environmentally safe, non toxic, no VOCs
- No clay fillers
- Excellent wetting properties
- No thinning in moist or humid environments
- *Meets and Complies with AWWA C217-2023 Standard, NACE SP0375-2018*

SCC WAX WRAP SYSTEM APPLICATION:

Minimal Surface Prep, SP2, removing loose scale, rust, paint and other foreign material. Begin by applying 1- 3 mils of SCC PrimeGuard, by gloved hand or brush on all areas of the structure that is to be wrapped with SCC Wax Wrap and/or filled with Pro-Mold putty. On wet, sweaty, cold or rusty surfaces, rub and press PrimeGuard Primer firmly, displacing any moisture and ensuring adhesion to the surface. Extend the PrimeGuard Primer paste 3 inches past where the wrap will be applied for visual inspection of use upon completion. When a smoother profile is desired, apply SCC anti-corrosive Pro-Mold Putty by pressing into contours, minor pits and voids for a more even surface. Ensure the putty is adhering while continuing to work Pro-Mold Putty to the area. Immediately after, wrap SCC Wax Wrap 80A/80U over the PrimeGuard primer/putty, beginning with a 100% overlap, transitioning into a spiral wrap, using a minimum 1- inch overlap. (Some environments may require a 50% overlap.) Make sure to press out all air pockets while smoothing out lap seams on straight pipe. For Flanges, Fittings and Tees or other irregular shaped surfaces, leave slack in wrap while wrapping to ensure sufficient coverage that also contours to irregular shaped surfaces, then smooth out seams after wrapped to ensure self-sealing. The wax-based tape shall be applied by pressing and molding the tape into conformity with the surface so that it does not bridge over irregular surface configurations. Upon completion there should be no air pockets underneath the wrap; wrap should have direct, intimate contact with the surface to be protected.



VCP Sales is proud to be the exclusive Global distributor of SCC Wax Wraps and its' associated corrosion prevention products.

www.vcpsales.com

SCC MOISTURE-CURED HD OUTERGUARD

Blend of plasticizers and resins saturated into a heavy duty synthetic carrier that cures to a hard cast by using moisture that provides protection and mechanical strength during backfill or substrate at risk for abrasion.

Can be used on above or below ground pipe, over any coating system.

USE:

UV Resistant outerwrap that increases mechanical protection over SCC 80U and 80A Wax Wrap.

PACKAGING:

4"x20' rolls (10 Rolls/Case)	Coverage/Case: 50% Overlap: 33ft ²
6"x30' rolls (5 Rolls/Case)	Coverage/Case: 50% Overlap: 37.5ft ²
6"x50' rolls (2 Rolls/Case)	Coverage/Case: 50% Overlap: 25ft ²
9"x50' rolls (1 Rolls/Case)	Coverage/Case: 50% Overlap: 18.75ft ²

SPECIFICATIONS:

Color: Yellow, Gray *custom colors available
 Thickness: 60mil average
 Application Temp: -20°F - 125°F | *Operating Temp: -29°F - 348°F*

APPLICATION:

With gloves, dip in water for 30 seconds, squeeze the roll to remove excess water and begin tightly spiral wrapping with a 50% overlap over SCC Wax Wrap or other protective coating.

If applying on verticle substrate, start at bottom spiral wrapping up. Make sure to extend past coating applied for better anchoring. Use stretch wrap to secure ends during curing. Cure Time: 30 mins



PE OUTERWRAP

Heavy Duty polyethylene backing in the form of a roll, calendered with an adhesive. The tape is used as an Outer Wrap for the mechanical protection of the SCC products against soil stress, back fill procedures and other forms of mechanical impact.

SCC PLY-GUARD

High-cling plastic providing mechanical barrier over the SCC Wax Wrap, that stays flexible to conform to irregularly shaped surfaces.

USE:

For use over SCC Wax Wrap as a mild buffer and reinforcement of the primer and wax wrap.

PACKAGING:

4"x50' rolls (27 Rolls/Case)	Coverage/Roll: 50% Overlap: 8.33ft ²
6"x50' rolls (18 Rolls/Case)	Coverage/Roll: 50% Overlap: 12.5ft ²
9"x50' rolls (12 Rolls/Case)	Coverage/Roll: 50% Overlap: 18.75ft ²
12"x50' rolls (9 Rolls/Case)	Coverage/Roll: 50% Overlap: 25ft ²

SPECIFICATIONS:

Color: Clear
 Thickness: 3.6mils

APPLICATION:

With medium tension, spiral wrap Ply-Guard Outerwrap with a 50% overlap and past the coating on both ends.

SCC OUTERWRAP-G

A resin-coated, fiberglass fabric that acts as an outer-layer over our SCC Wax Wrap coating system.

USE:

The Fiberglass Fabric Wrap adds an extra layer of protection against soil stress during backfill.

PACKAGING:

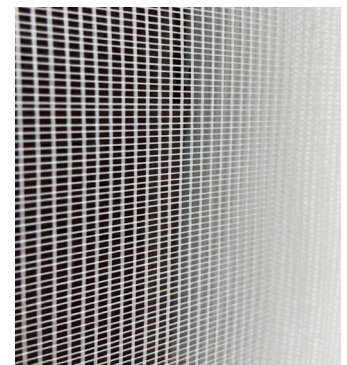
4"x150' rolls (18 Rolls/Case)	Coverage/Roll: 1" Overlap/37.5ft ²
6"x150' rolls (12 Rolls/Case)	Coverage/Roll: 1" Overlap/62.5ft ²
12"x150' rolls (6 Rolls/Case)	Coverage/Roll: 1" Overlap/137.5ft ²

SPECIFICATIONS:

Color: White
 Tensile Strength: 85lb minimum
 Thickness: 0.005" minimum
 Wrap/Fill Threads: 10 per inch

APPLICATION:

By hand, spiral wrap SCC Outerwrap-G over SCC Wax Wrap using a 1" overlap while rubbing firmly and completely onto the wax wrap.



VCP Sales is proud to be the exclusive Global distributor of SCC Wax Wraps and its' associated corrosion prevention products.